

Scientific Report



Headquarters

C/ Muntaner, 383 3r. 08021
Barcelona
Tel. (+34) 93 414 55 66

For any matter concerning this report
please contact:
comunicacio@carrerasresearch.org

The report can also be downloaded
from:
<http://www.carrerasresearch.org>

Publisher, layout and typesetting

Josep Carreras Leukaemia Research
Institute

Photography

Photographic archives of the Josep
Carreras Leukaemia Foundation and
the Josep Carreras Leukaemia
Research Institute



Our motto is dynamic, our aim is firm, and our determination unremitting.

I recovered from leukaemia thanks to the extraordinary work of the doctors and nurses who looked after me. Like many grateful patients, I also benefited from the perseverance of scientists searching for a cure for this disease.

Since the day we were established we have always offered financial assistance for research, through grants, university funding and, mainly, by providing funding for projects and the creation of laboratories and other scientific infrastructures.

We can not stop until leukaemia becomes a totally curable disease. The creation of the Josep Carreras Leukaemia Research Institute is the latest sign of what drives us forward: our unceasing determination to battle against this disease until we defeat it.

Thanks to the extraordinary team of doctors, experts in life sciences, the support of the Generalitat de Catalunya, and the solidarity of our generous donors, our Institute is now a reality.

I would like to thank you for your interest in our institution and invite you to join us in our crusade.

*Josep Carreras
President Board of Trustees
Josep Carreras Leukaemia Research Institute (IJC)*



Contents



About us

Welcome
Who we are and what we do
Mission, vision and values

Our team

Governing bodies
Organisational chart
Human resources

Financial data

Income statement
Balance sheet
Fundraising

Scientific activities

Research groups
Research projects
Technology platforms
Clinical trials
Innovation and
transferability

Scientific production

Publications
Impact factors

Training activities

Graduate and post-graduate
Theses read
Seminars and sessions
Courses and congresses

Cooperation

Agreements
Institutions involved

Communication

Scientific dissemination
Institutional events

Upcoming challenges

Phase 1 of the new BDN building
Mission, vision, values



About us



Welcome



Once again the IJC's annual report is testimony to the excellent research being carried out at the three Josep Carreras campuses. Our congratulations are due, therefore, to everyone for their magnificent work and scientific rigour.

2014 was a year in which progress was made in the fight against leukaemia. It was a year of combined scientific efforts, continuing cooperation and commitment to society.

A centre totally capable of synchronising research, health care, innovation and teaching, something of fundamental importance for achieving scientific excellence.

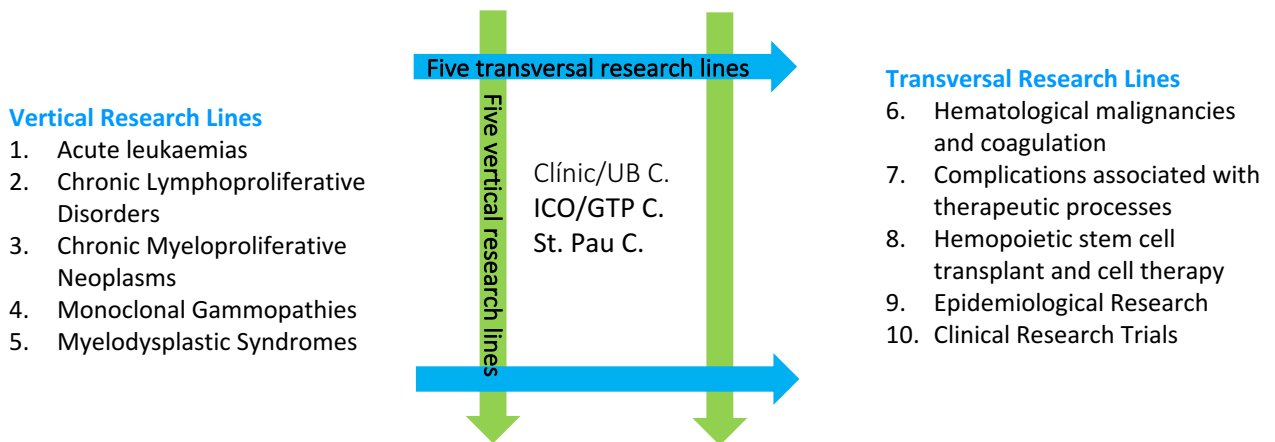
Highlights of the IJC's leadership are the construction of the new building in Badalona and the agreements about the SUMA project between the Germans Trias Institute (IGTP) and the Institute for Predictive and Personalised Cancer Medicine (IMPPC).

With all this in mind, I would like to invite you to discover more from the following pages about the activities in 2014, activities which have earned this centre a leading position in biomedical research to confront leukaemia.

Evarist Feliu
President of the Delegate Committee
Josep Carreras Leukaemia Research Institute (IJC)

Who we are and what we do

The Josep Carreras Leukaemia Research Institute (IJC), a Generalitat de Catalunya Research Centre (CERCA), was established with the aim of promoting biomedical research into, and the development of, personalised medicine in the field of malignant blood diseases, especially leukaemia. It is a centre without precedent which, with the work and dedication of researchers from around the world, uses the most innovative technologies to try to vanquish leukaemia and other malignant blood diseases.



The IJC has three independent and coordinated scientific campuses: the Hospital Clínic-UB Campus, located at the research facilities of Barcelona's Hospital Clínic, and those of the University of Barcelona (UB) Faculty of Medicine; the Catalan Institute of Oncology/Germans Trias i Pujol Campus in Badalona, located near the Germans Trias i Pujol University Hospital and its research foundation and the Autonomous University of Barcelona (UAB) Germans Trias i Pujol Teaching Unit; and thirdly, the Sant Pau Campus and its research foundation, located within the health care facilities of the Hospital de la Santa Creu i Sant Pau and the UAB's Sant Pau teaching unit. The IJC's Hospital Clínic-UB Campus reaffirms the UB Faculty of Medicine and the Hospital Clínic's scientific commitment to excellence in the field of hematology, which commenced with the work of Prof. Farreras Valentí and which has been able to continue thanks to the extraordinary work carried out by Prof. Ciril Rozman and those who studied under him.



Mission

Our mission is to carry out research into the basic, epidemiological, preventive, clinical and transferable aspects of leukaemia and other malignant blood diseases.

Vision

The Josep Carreras Leukaemia Research Institute's vision is for the research it does to identify new therapeutic targets that will make it possible to develop more precise and less aggressive treatments. We aspire to understanding the origin and development of leukaemias and other malignant blood diseases in order to prevent them. We are working so that, in the future, all leukaemias will be curable.

Values

Altruism

We are inspired by the example of Josep Carreras and the professional staff he has chosen to found the Institute that bears his name. Financial donations, be they public or private, are used in the most efficient way by simplifying administrative procedures and reducing the secondary costs of our main mission.

Respect

We protect the dignity and respect the rights of everyone who has a relationship with the Institute, especially those who collaborate on our projects. Our work is as stalwart as the patients and families who participate in the project, and our sponsors and staff.

Perseverance

We will continue until all leukaemias can be cured

Sharing

We take full advantage of all possible synergies, we promote continuing cooperation, the creation of new alliances and group work. We also promote the dissemination of information about leukaemia and encourage citizen participation.

Talent

We aspire to attracting, promoting and creating talent.



Our team



Governing bodies

The highest governing body is the Board of Trustees, on which are represented: the Josep Carreras Foundation, the Catalan Government Ministry of Business and Knowledge, the Catalan Government Ministry of Health, the Autonomous University of Barcelona (UAB), the University of Barcelona (UB), Badalona Town Council, the Directorate General for Health Research and Planning, the Catalan Institute of Oncology, the Northern Metropolitan Territorial Area Administration, the Catalan Foundation for Research and Innovation, the Hospital Clínic/August Pi i Sunyer Institute for Biomedical Research (Idibaps), the UB Hospital Coordination Committee and the Research Centres of Catalonia Institution Foundation (ICERCA).

Board of Trustees

President

Mr. Josep Carreras Coll

President of the Josep Carreras Foundation and the Josep Carreras Leukaemia Research Institute

First Vice-president

Catalan Government Minister of Business and Knowledge

Second Vice-president

Catalan Government Minister of Health

Members

Rector Autonomous University of Barcelona (UAB)
Rector University of Barcelona (UB)

Mayor of Badalona

Director General for Research, Catalan
Government Ministry of Business and Knowledge

Director General for Health Research and Planning

Deputy Director General for Health Research and
Innovation

Director General Catalan Institute of Oncology

Administrator Northern Metropolitan Territorial Area

Secretary for Universities and Research, Catalan
Government Ministry of Business and Knowledge

Director Catalan Foundation for Research and
Innovation

Research Director Hospital Clínic - IDIBAPS

Treasurer of the Josep Carreras Leukaemia
Foundation

Vice-president of the Josep Carreras Leukaemia
Foundation

Trustee of the Josep Carreras Leukaemia
Foundation

Administrator of the Josep Carreras Leukaemia
Foundation

Vice-rector for Research and Transferability,
Autonomous University of Barcelona (UAB)

University of Barcelona Hospital Coordination
Committee

Secretary

Director of the Research Centres of Catalonia
Institution Foundation (ICERCA)



Delegate committee

President

Prof. Evarist Feliu,
Coordinator of the ICO-Germans Trias i Pujol
Campus

Members

PRICS coordinator, Catalan Government Ministry of
Health

Director General, Catalan Government Ministry of
Health, Directorate General Health Resources
Planning Regulation

Directorate General for Research, Catalan
Government Ministry of Business and Knowledge

Director iCerca, CERCA Institution, Research
Centres of Catalonia

Administrator, Josep Carreras International
Foundation

University of Barcelona Commissioner for Hospital
Coordination

Vice-rector for Strategic Projects and Planning,
Autonomous University of Barcelona

CoExternal Scientific Committee

President

Prof. Lucio Luzzatto, Instituto Toscano Tumori
Firenze

Members

Prof. Robert Sackstein, Dana-Farber/Harvard
Cancer Center Boston

Prof. Francesco Lococo, Università degli Studi di
Roma "Tor Vergata"

Prof. Alberto Orfao, CIC Centro de Investigación del
Cáncer Salamanca.

Prof. Brigitte Schlegelberger, University of
Hannover

Internal Scientific Committee

UB-Clínic Campus

Álvaro Urbano Ispizúa (Internal Scientific
Committee Coordinator)

Pablo Menéndez (Campus Research Director)

Jordi Esteve Reyner

Armando López Guillermo

Joan Bladé Creixentí

Francisco Cervantes Requena

ICO-GTiP Campus

Evarist Feliu Frasnado (President of the Delegate
Committee)

Francesc Solé (Campus Research Director)

Josep M^a Ribera Santasusana

Lurdes Zamora Plana

José Tomás Navarro Ferrando

Juan Manuel Sancho Cía

Sant Pau Campus

Jordi Sierra

Josep Nomdedeu

Joan Carles Souto

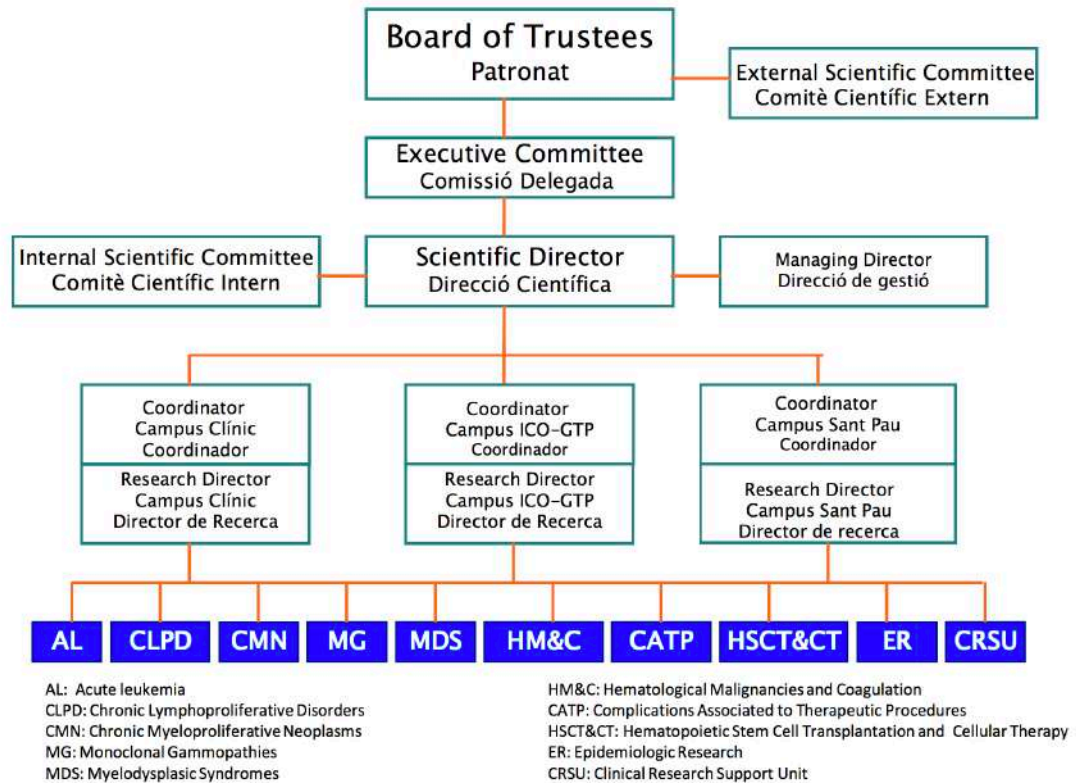
Ramon Mangues

Carol Moreno





Organisational chart



Scientific directors



Campus ICO-GTP
Francesc Solé

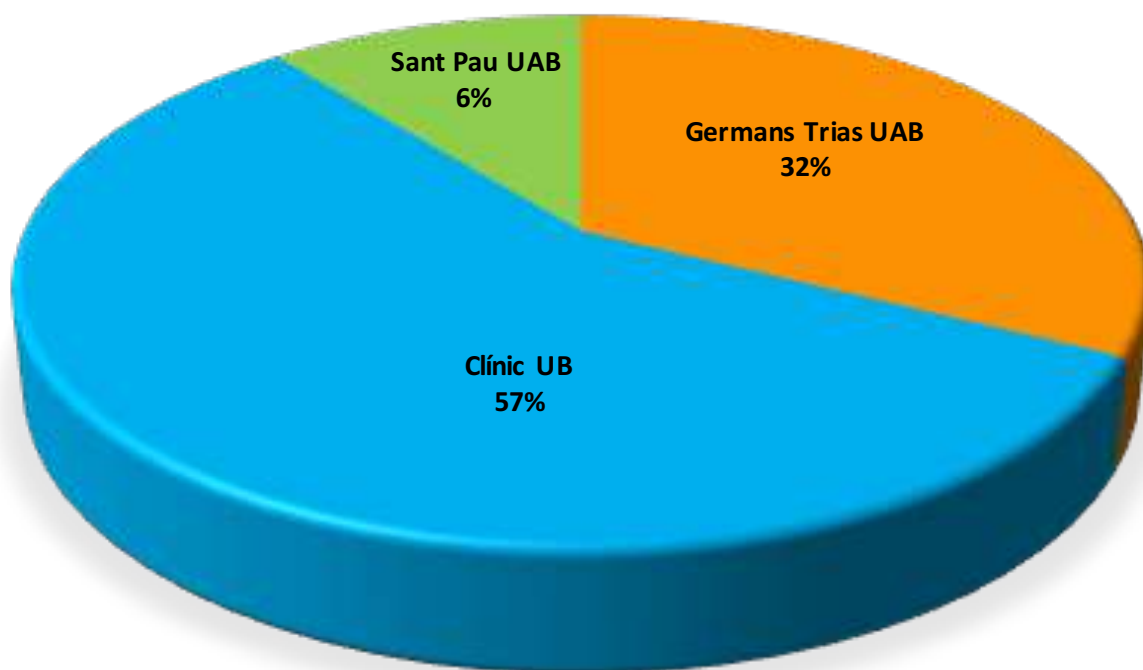


Campus Clínic-UB
Pablo Menéndez



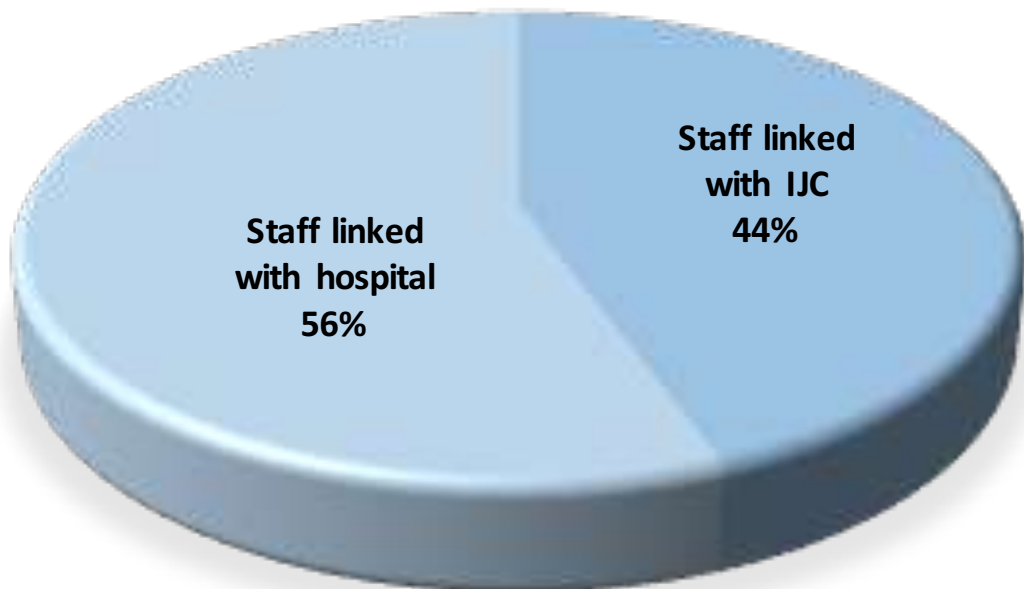
Campus Sant Pau
Jordi Sierra

	IJC ICO Germans Trias UAB	IJC Clínic UB	IJC Sant Pau UAB	IJC Shared
Lead researchers	2	2		
Pre-doctoral researchers	2	11		
Post-doctoral researchers	2	5	1	
Support staff	5	3	3	
Management and administration staff	1			11
Staff professionally linked with the IJC	12	21	4	11
Staff professionally linked with the Hospital	28	14	18	





At the three hospitals where the IJC has a presence there has always been a great willingness to participate in clinical research. And there are clinics with a very considerable background in basic sciences. Integration, in this respect, must therefore not be just a question of maintaining present levels, but of increasing them in order to enhance the added value it represents in both the health sciences and in clinical practice.





Income statement

In 2014 there was an increase of more than 160% in income from the capture of public funds and the provision of services.

With regard to expenses, 60% of the IJC's outlay corresponds to staffing. There was an increase in total expenses of 170%, corresponding to the incorporation of new research teams. At this early stage the evolution of income, expenses and investments gives a negative result of €348,557.03.



	2014
Income from activities	€1.875.004,95
Services rendered	€381.240,32
Official subsidies for activities	€1.234.009,72
Other subsidies. donations...	€259.754,91
Self-constructed assets	
Supplies	-€504.271,90
Other income from activity	€7.914,76
Staff costs	-€1.050.398,36
Wages and salaries	-€813.338,79
Social security expenses	-€237.059,57
Other expenses	-€321.616,66
External services	-€320.066,66
Taxes	-€50,00
Losses. depreciation...	€0,00
Other current period losses	-€1.500,00
Fixed asset depreciation	-€379.652,53
IJC Subsidy	€31.095,51
Other income	€1.238,23
OPERATING INCOME	-€340.686,00
Financial income	€1.372,75
Financial expenses	-€9.598,69
Subsidy return expenses	
Exchange rate differences	€354,92
Financial result	-€7.871,02
Surplus / deficit before tax	-€348.557,02
Tax on profit	€0,00
SURPLUS / DEFICIT OF THE FINANCIAL YEAR	-€348.557,02

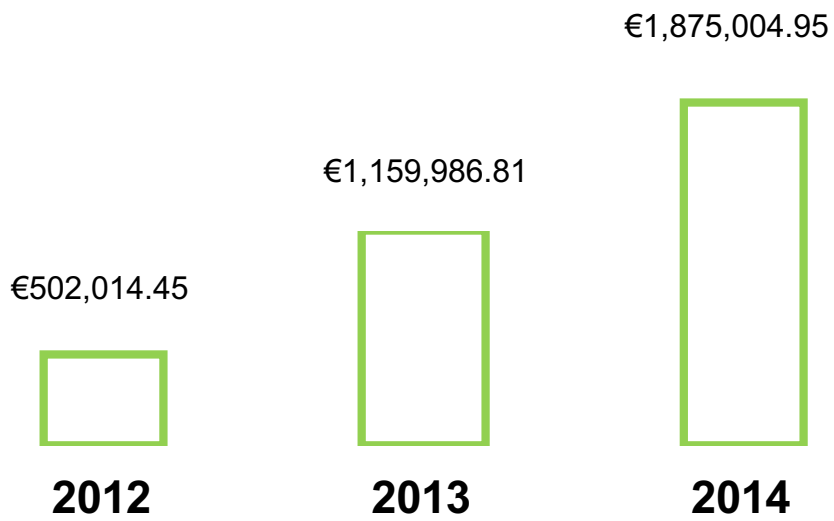
Balance sheet

ASSETS	2014
Non-current assets	€6.385.720,72
Intangible fixed assets	€2.197.592,58
Tangible fixed assets	€4.157.148,86
Long-term investments in group and associated entities	€0,00
Long-term financial investments	€30.979,28
Current assets	€4.297.451,85
Stock	
Users, sponsors and other debtors from activities	€2.710.437,50
Other credits with the public administration	
Short-term financial investments	
Short-term accruals	€20.020,35
Cash and others	€1.566.994,00
TOTAL ASSETS	€10.683.172,57

LIABILITIES	2014
Net assets	€4.703.682,48
Equity	€3.565.944,75
Start-up funds	€4.043.656,50
Special funds	
Profit or loss from previous years	-€129.154,73
Year profit or loss	-€348.557,02
Subsidies, donations and legacies	€1.137.737,73
Non-current liabilities	€1.714.688,37
Long-term debt	€1.714.688,37
Current liabilities	€4.264.801,72
Short-term provisions	
Short-term debt	€3.392.153,46
Creditors for activities and others	€250.807,79
Short-term debts with group and associated entities	€56.597,77
Current tax liabilities and other debts with the public administration	
Short-term accruals	€565.242,70
TOTAL (LIABILITIES + NA)	€10.683.172,57



Evolution of income

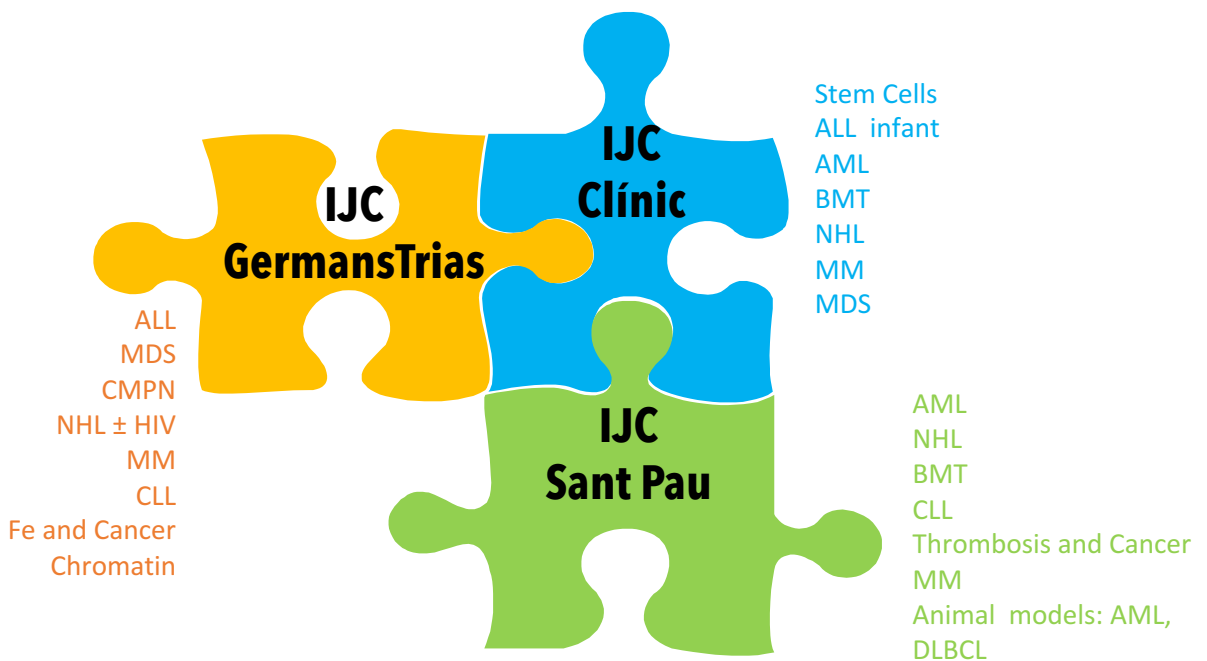




Scientific activity



Research groups



Research projects

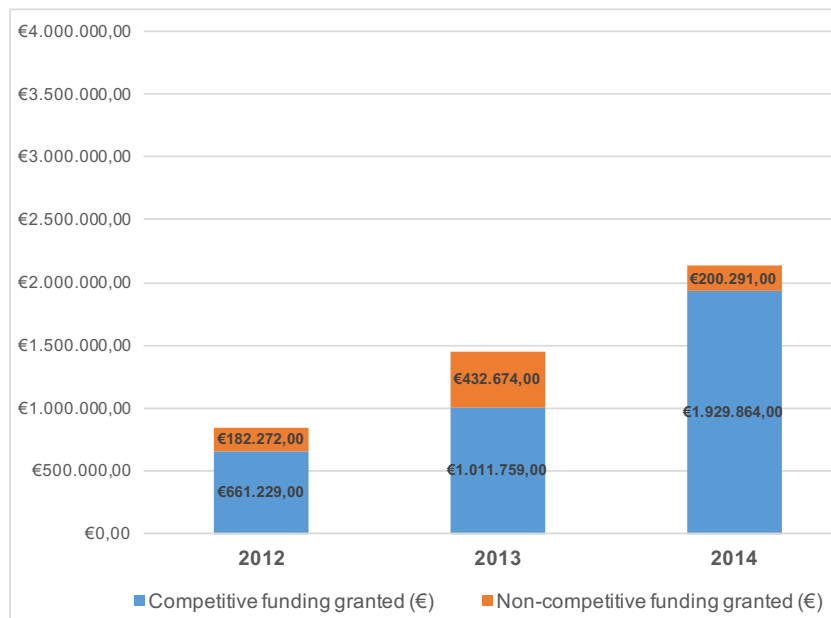
IP	Projects 2014	Amount
Josep M ^a Ribera	ISCIII AES PIS	€98.615,00
Francesc Sole	ISCIII AES PIS	€134.915,00
Francesc Sole	SGR AGAUR	€50.000,00
Laura Palomo	FPU MECD	€68.019,00
Lorenzo Pasquali	RYC MINECO	€208.600,00
Marcus Buschbeck	SAF-39749	€41.671,00
Clara Bueno	ISCIII AES PIS	€134.915,00
Amaia Etxabe	FPI MINECO	€83.900,00
Alejandra Sanjuan	MARIE CURIE- REA	€100.000,00
Alessandra Giorgetti	RYC MINECO	€208.600,00
Cristina Prieto	ISCIII PFI	€54.000,00
Clara Bueno	MIQUEL SERVET_ISCIII	€151.043,00
Clara Bueno	ISCIII AES PIS	€134.915,00
Alessandra Giorgetti	SAF-43072	€115.571,00
Pablo Menendez	SAF-43065	€301.060,00
Pablo Menendez	SGR AGAUR	€44.000,00
		€1.929.824,00





Competitive funding granted

	ICO Germans UAB	Clínic UB
Active projects (national)	9	16
Projects awarded (national)	6	9
Projects tendered (national)	15	5
Active projects (international)		1
Projects awarded (international)		1
Projects tendered (international)	2	4
Projects awarded (public)	6	10
Projects awarded (private)	8	4
Active research networks	1	
Research networks awarded		
Competitive funding granted (€)	€601.820,00	€1.328.044,00
Non-competitive funding granted (€)	€32.791,00	€167.500,00
Sum total competitive and non-competitive overheads granted	€120.364,00	€265.608,00



Technology platforms

Cytogenetics platform



The Josep Carreras Leukaemia Research Institute cytogenetics platform is directed by Dr. Francesc Solé. The platform includes the Catalan Institute of Oncology's (ICO) Cytogenetics Laboratory and the 32K Bacterial Artificial Chromosome (BAK) library.

Affymetrix Microarrays Platform



The Affymetrix® Microarrays Platform (AMP) is a service focused on microarray DNA and RNA solutions provided by Affymetrix. The main aim is to find solutions, based on basic research, applied research and diagnosis, that lead towards personalised medicine.

Blood cancer samples



The administration of the collection, processing and storage of blood cancer samples. These samples are stored in a collection called 'Collection of samples from patients with hematologic neoplasms'.

Fluidigm Platform



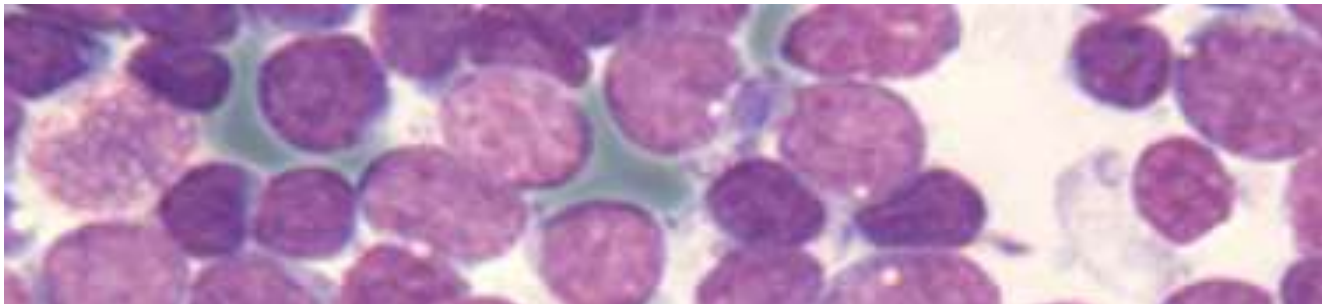
The Fluidigm platform is used to create integrated fluid circuits (IFCs) which are single-use biochips which automate PCR reactions using the volumes of nanolitres from two samples and reagents to produce consistent results.



Clinical trials

Clinical trials are a fundamental part of our research. In this regard, the IJC evaluates treatments, the efficacy of drugs, and the suitability of equipment.

It enables new treatments to be tested to prevent, relieve or cure diseases.



Transferability and innovation

The IJC vouches for the transferability of knowledge, and the value of and search for market opportunities, in the broadest terms. As well as being in its own interests, it contributes to society and our country's progress.

At the present time the IJC has the following patent pending:

Methods for treating diagnosing and prognosing a haematological malignancy

Inventor: Ruth Muñoz Risueño

WO 2015/197839

PCT/EP2015/064571

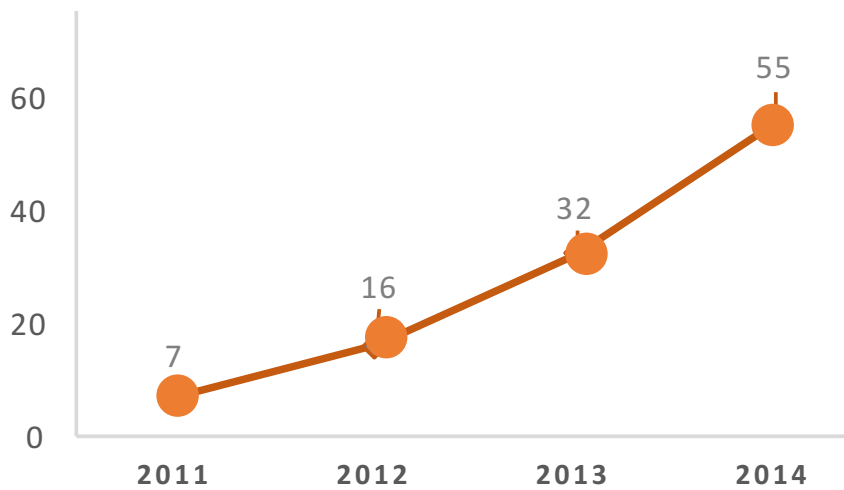
A black and white photograph of a diverse group of scientists in a laboratory. They are smiling and looking towards the camera. A large, semi-transparent circular graphic is overlaid on the image, transitioning from orange at the top to green at the bottom. The text "Scientific production" is written in a large, black, sans-serif font across the center of this graphic.

Scientific production

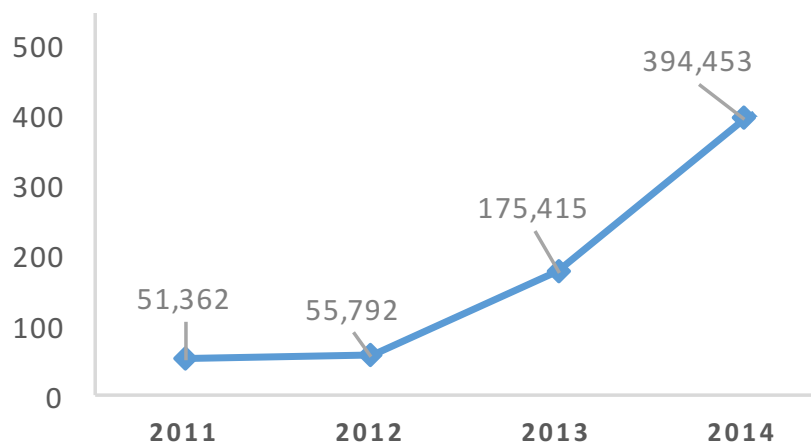


Publications

Indexed articles



Global impact factor



Total articles
55

TOTAL FI
394.453

Citation index
29.567



Teaching activities



Teaching

The IJC provides a high-quality teaching programme for students, scientists, technicians and others with an interest in achieving a solid and up-to-date grounding in the field of leukaemia and malignant blood diseases.

The IJC organises a Doctorate in Hematology, a Master's degree in malignant blood diseases and it participates in the teaching for degrees in medicine and biomedicine.

In 2014 the following theses were presented at the IJC:

Citogenetic study of leukemia and myelodysplastic syndromes in different health areas of Catalonia: 1990-2009

Doctoral student: Isabel Granada (UAB)

Directors: Francesc Solé/Evarist Feliu

EXCELENT CUM LAUDE.

Badalona, June 2014

Study of molecular profiles of patients with myelodysplastic syndrome

Doctoral student: Vera Ademà (UAB)

Director: Francesc Solé

Badalona, January 2014

EXCELENT CUM LAUDE.



Training

The IJC organises complementary training activities at all levels, from scientific conferences, monthly seminars and technology sessions, to specialised courses.

Training courses

4

Scientific conference

1

Scientific seminars

18



Internal sessions

MDS GRUP
FRANCESC SOLE

Mar Mallo
Vera Ademà

MPN GROUP
LURDES ZAMORA, BLANCA XICOY
Laura Palomo

GLICOLSILATION GROUP
FUMI YAMAMOTO
Emili Cid

ALL GROUP
JM RIBERA
Eulalia Genescà
Jordi Ribera

IRON GROUP
MAYKA SANCHEZ
Jorge Couso

CHROMATIN GROUP
MARCUS BUSCHBECK
Roberto Malinvemi
Julien Douet



Courses

Application of cytogenetics and FISH to the study of myelodysplastic syndromes. Celgene Internacional.

Directors: Francesc Solé. In collaboration with: Mar Mallo, Vera Ademà, Laura Palomo. Blanca Espinet, Marta Salido.
Badalona, May 2014

Application of cytogenetics and FISH to the study of myelodysplastic syndromes. Celgene Internacional.

Directors: Francesc Solé. In collaboration with: Mar Mallo, Vera Ademà, Laura Palomo. Blanca Espinet, Marta Salido.
Badalona, May 2014

Application of cytogenetics and FISH to the study of myelodysplastic syndromes. Celgene Internacional.

Directors: Francesc Solé. In collaboration with: Mar Mallo, Vera Ademà, Laura Palomo. Blanca Espinet, Marta Salido.
Badalona, June 2014

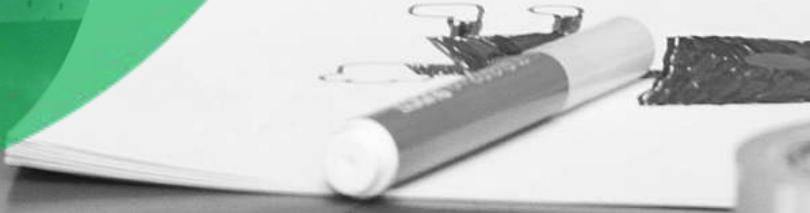
CUBIMOL. Paper: Cytogenetic and genetic changes in myelodysplastic syndromes.

Speaker: Francesc Sole
Madrid September 2014





Cooperation





Agreements

The IJC makes a great effort to establish continuing cooperation agreements, and it focuses on broadening its strategic alliances and agreements with the pharmaceutical industry, as well as other private organisations.

At the present time the following institutions are connected with the IJC:





Communication



Communication

The IJC knows that it is of prime importance to tell people about the work we do if we are to strengthen our bonds with society and its citizens. The desire to integrate social corporate responsibility into our management model is closely linked to the organisational values of the Josep Carreras Foundation.

To this end, the IJC has actively participated in scientific dissemination and in the creation of scientific vocations.

Scientific conference at the Josep Carreras Leukaemia Research Institute



Clínic-UB Campus opening ceremony



Science week, Badalona town council





Upcoming challenges



Upcoming challenges

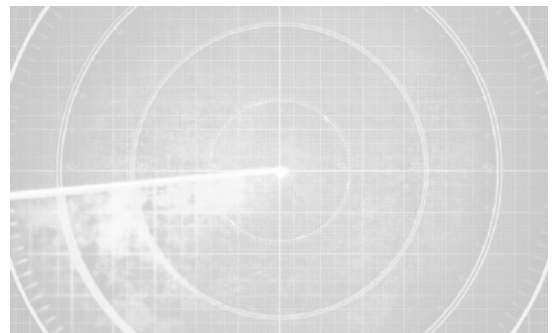
Start of phase 1 of the new IJC building



In 2014 we were able to complete the building, and phase 1 of the Campus construction was awarded, after a public call for tenders, to the ACR Construction Company, which was responsible, amongst other such buildings, for the biomedical research CIM centre, University of Navarre, Pamplona.

This phase of construction will consist of the installation and equipping of all the common services, the closure of the facades and ceilings and the adaptation of the building for use as a work space, with up to 50% of the available floor space being made available for laboratories on each of the three floors housing them. The rest of the space, potentially useful for laboratories, is being reserved for future expansion.

Mission, vision and values



In 2015 the IJC will have to have a unique and shared ethos, a culture that brings together and reflects the following definitions:

Mission: the IJC's *raison d'être*.

Vision: establishing the IJC's aspirations, the long-term view.

Values: the ethical and functional principles guiding the IJC's culture and daily work.

The IJC aspires to be a model of excellence in public administration.



Annex



Scientific production 2014

1. AYLLON V, **BUENO C**, RAMOS-MEJÍA V, REAL P, ROMERO T, NAVARRO-MONTERO O, GARCÍA-LEÓN MJ, TORIBIO ML, BIGAS A. **MENENDEZ P***. The Notch ligand DLL4 marks human hematoendothelial progenitors and regulates their hematopoietic vs endothelium fate. *Leukemia* 2014 (addressing referees's suggestions) **IF: 9,379**
2. **CASTAÑO J***, **MENENDEZ P***, BRUZOS C, SOUSA A, STRACCIA M, ZABALETA L, VAZQUEZ N, ZUBIARRAIN A, CANALS JM, CARVAJAL X, TORRECILLA M, SANCHEZ-PERNAUTE R, **GIORGETTI A**. Rapid and efficient neural conversion of human hematopoietic cells by SOX2 and c-MYC Sendai vectors. *Stem Cell Rep* 2014 (in press). Cell Editorial * co-first author. **IF:**
3. FREIJE A, CEBALLOS L, CAGIGAS M, MOLINUEVO R, ALONSO P, RODRIGUEZ R, **MENENDEZ P**, DE DIEGO E, GANDARILLAS A. Inactivation of p53 forces expel of human epidermal cells via replication stress, mitotic slippage and squamous differentiation. *Cell Rep* 2014 (published ahead). **IF: 7,207**
4. TOSCANO M, NAVARRO-MONTERO O, AYLLON V, RAMOS-MEJIA V, **BUENO C**, ROMERO T, COBO M, MARTIN F, **MENENDEZ P***, REAL PJ*. SCL/TAL1-mediated transcriptional network enhances megakaryocytic differentiation of human embryonic stem cells. *Mol Ther* 2014 (published ahead). **IF: 6.425**. * Co-corresponding author.
5. FERNÁNDEZ AF, BAYÓN GF, URDINGUIO RG, TORAÑO EG, GARCÍA M, CARELLA A, PETRUS-REURER S, FERRERO C, MARTINEZ-CAMBLOR P, CUBILLO I, GARCÍA-CASTRO J, DELGADO-CALLE J, RIANCHO JA, **BUENO C**, **MENÉNDEZ P**, MENTINK A, MARESCHI K, CLAIRE F, FAGNANI C, MEDDA E, TOCCACELI V, BRESCIANINI S, MORAN S, ESTELLER M, STOLZING A, DE BOER J, NISTICÒ L, STAZI MA, FRAGA MF. H3K4me1 marks DNA regions hypomethylated during aging in stem and differentiated cells. *Genome Res* 2014 (published ahead). **IF. 13,852**
6. GUIU J, BERGEN DJ, ISLAM K, AYLLÓN V, NORTON L, RUIZ-HERGUIDO C, LÓPEZ-BIGAS N, **MENÉNDEZ P**, ESPINOSA L, BIGAS A. Identification of CDCA7 as a novel Notch transcriptional target involved in Hematopoietic Stem Cells emergence. *J Exp Med* 2014 (published ahead). **IF: 13.912**
7. RAMOS-MEJÍA V, NAVARRO-MONTERO O, AYLLÓN V, **BUENO C**, ROMERO T, REAL PJ, **MENENDEZ P***. HOXA9 promotes hematopoietic commitment of human embryonic stem cells. *Blood* 2014 (published ahead). **IF: 9,975**
8. RODRÍGUEZ R, ROSU-MYLES M, ARAÚZO-BRAVO M, **HORRILLO A**, GÓNZALEZ-REY E, DELGADO M, **MENENDEZ P***. Human bone marrow stromal cells lose immunosuppressive and anti-inflammatory properties upon oncogenic transformation. *Stem Cells Reports* 2014; 3:606-619. Cell Editorial. **IF:**
9. VELASCO I, SALAZAR P, **ROMERO-MOYA D**, **CASTAÑO J**, **RAMOS-MEJIA V**, **GIORGETTI A**, **MENENDEZ P***. Generation of neurons from healthy individuals and neurological patients through induced pluripotency and direct conversion. *Stem Cells* 2014; 32:2811-2817. **IF: 7.133**
10. **BUENO C**, ROLDÁN M, ANGUITA E, **ROMERO-MOYA D**, ROSU-MYLES M, CAÑIZO C, GARCÍA R, GÓMEZ-CASARES M, FUSTER JL, JURADO M, DELGADO M, **MENENDEZ P***. Bone marrow mesenchymal stem cells from patients with aplastic anemia preserve functional and immune properties and do not contribute to the pathogenesis of the disease. *Haematologica* 2014; 99:1168-1175. **IF: 5,868**



11. RODRIGUEZ RM, SUAREZ-ALVAREZ B, SALVANÉS R, HUIDOBRO C, TORAÑO EG, GARCIA-PEREZ JL, LOPEZ-LARREA C, FERNANDEZ AF, **MENENDEZ P**, FRAGA MF. Role of BRD4 in hematopoietic differentiation of embryonic stem cells. *Epigenetics* 2014;9: 566-578. **IF: 5,108**
12. RUBIO R, ABARRATEGI A, GARCÍA-CASTRO J, SUÁREZ C, TORNÍN J, SANTOS L, COLMENERO I, **MENENDEZ P***, RODRÍGUEZ R. Bone microenvironment signals are essential for osteosarcoma development from p53- and Rb-deficient mesenchymal stem cells. *Stem Cells* 2014; 32:1136-1148. **IF: 7.133**
13. PÉREZ-MATO M, RAMOS-CABRERO P, SOBRINO T, BLANCO M, RUBAN A, MIRELMAN D, **MENENDEZ P**, CASTILLO J, CAMPOS F. Human recombinant glutamate oxaloacetate transaminase 1 (GOT1) supplemented with oxaloacetate induces a protective effect after cerebral ischemia. *Cell Death & Dis* 2014; 5:992-1001. **IF: 5.177**
14. MONTES R, BURSEN A, MARSCHALEK R, PRELLE C, CHILLÓN C, **ROMERO-MOYÁ D, PRIETO C, NAVARRO-MONTERO O, BUENO C, MENENDEZ P***. Ligand-independent FLT3 activation does not cooperate with MLL-AF4 to immortalize/transform cord blood CD34+ cells. *LEUKEMIA* 2014; 28:666-674. **IF: 9.379**
15. **MORENO-MARTÍNEZ D, NOMDEDEU M, LARA-CASTILLO MC, ETXABE A**, PRATCORONA M, **TESI N, DÍAZ-BEYÁ M, ROZMAN M, MONTSERRAT E, URBANO-ISPIZUA A, ESTEVE J, RISUEÑO RM**. XIAP inhibitors induce differentiation and impair clonogenic capacity of acute myeloid leukemia stem cells. *Oncotarget* 2014; 5:4337-46. **IF: 6.627**
16. CALVO X, NOMDEDEU M, NAVARRO A, TEJERO R, COSTA D, MUÑOZ C, PEREIRA A, PEÑA O, **RISUEÑO RM, MONZÓ M, ESTEVE J, NOMDEDEU B**. High levels of global DNA methylation are an independent adverse prognostic factor in a series of 90 patients with de novo myelodysplastic syndrome. *Leuk Res* 2014; 38:874-881. **IF: 3.348**
17. ROZMAN M, NAVARRO JT, ARENILLAS L, AVENTÍN A, GIMÉNEZ T, ALONSO E, PEREA G, CAMÓS M, NAVARRETE M, TUSET E, FLORENSA L, MILLÁ F, NOMDEDÉU J, DE LA BANDA E, DÍAZ-BEYÁ M, PRATCORONA M, GARRIDO A, NAVARRO B, BRUNET S, SIERRA J, **ESTEVE J**; Grup Català de Citologia Hematològica and Spanish CETLAM Group (Grupo Cooperativo Para el Estudio y Tratamiento de las Leucemias Agudas Mieloblásticas). Multilineage dysplasia is associated with a poorer prognosis in patients with de novo acute myeloid leukemia with intermediate-risk cytogenetics and wild-type NPM1. *Ann Hematol.* 2014; 93:1695-703. **IF: 2,396**
18. DÍAZ-BEYÁ M, BRUNET S, NOMDEDÉU J, TEJERO R, DÍAZ T, PRATCORONA M, TORMO M, RIBERA JM, ESCODA L, DUARTE R, GALLARDO D, HERAS I, QUEIPO DE LLANO MP, BARGAY J, MONZO M, SIERRA J, NAVARRO A, **ESTEVE J**; Cooperative AML group CETLAM (Grupo Cooperativo Para el Estudio y Tratamiento de las Leucemias Agudas y Mielodisplasias). MicroRNA expression at diagnosis adds relevant prognostic information to molecular categorization in patients with intermediate-risk cytogenetic acute myeloid leukemia. *Leukemia.* 2014; 28:804-812. **IF: 9,379**
19. **MARTÍN-ANTONIO B, NAJJAR A, ROBINSON S, CHEW C, LI S, YVON E, THOMAS M, MCNIECE I, ORLOWSKI R, MUNOZ-PINEDO AC, BUENO C, MENENDEZ P, FERNÁNDEZ DE LARREA C, URBANO-ISPIZUA A, SHPALL S, SHAH N**. Transmissible Cytotoxicity of Multiple Myeloma Cells By Cord Blood-Derived NK Cells Is Mediated By Vesicle Trafficking. *Cell Death Diff* 2014 (published ahead). **IF: 8.385**



20. BÁEZ A, **MARTÍN-ANTONIO B**, PIRUAT JI, BARBADO MV, PRATS C, ALVAREZ-LADERAS I, CARMONA M, PÉREZ-SIMÓN JA, **URBANO-ISPIZUA A**. Gene and miRNA Expression Profiles of Hematopoietic Progenitor Cells Vary Depending on Their Origin. *Biol Blood Marrow Transplant*. 2014; 20:630-9. **IF: 3.348**
21. BÁEZ A, **MARTÍN-ANTONIO B**, PIRUAT JI, PRATS C, ALVAREZ-LADERAS I, BARBADO MV, CARMONA M, **URBANO-ISPIZUA A**, PÉREZ-SIMÓN JA. The Granulocyte colony-stimulating factor produces long-term changes on gene and miRNA expression profiles in CD34+ cells from healthy donors. *Haematologica* 2014; 99:243-51. **IF: 5,868**
22. **MARTÍN-ANTONIO, B**, **ROMERO-MOYA D**, PRATCORONA, M, ESPIGADO, I, GALLARDO, D, BOSCH, A, BUÑO, I, MARTÍNEZ-LAPERCHE, C, JIMÉNEZ-VELASCO, A, DE LA CÁMARA, R, BRUNET, S, NIETO, JB, SUAREZ-LLEDO, M, FERNÁNDEZ-AVILÉS, F, MARTÍNEZ, C, ROVIRA, M, **URBANO-ISPIZUA, A**. A Gene variant in MIF (MIF-173 CC) is Associated with High Probability of Death by Sepsis in Patients Submitted to Allogeneic Stem Cell Transplantation (Allo-SCT). *Bone Marrow Transplantation*. (Under Review). **IF: 3,466**
23. SCHREZENMEIER H, MUUS P, SOCIÉ G, SZER J, **URBANO-ISPIZUA A**, MACIEJEWSKI JP, BRODSKY RA, BESSLER M, KANAKURA Y, ROSSE W, KHURSIGARA G, BEDROSIAN C, HILLMEN P. Baseline characteristics and disease burden in patients in the International Paroxysmal Nocturnal Hemoglobinuria Registry. *Haematologica* 2014; 99(5):922-9. **IF: 5,868**
24. FARZAM P, LINDNER C, WEIGEL UM, SUAREZ M, **URBANO-ISPIZUA A**, DURDURAN T. Noninvasive characterization of the healthy human manubrium using diffuse optical spectroscopies. *Physiol Meas*. 2014; 35:1469-91. **IF: 1.617**
25. ESPIGADO I, DE LA CRUZ-VICENTE F, BENMARZOUK-HIDALGO OJ, GRACIA-AHUFINGER I, GARCIA-LOZANO JR, AGUILAR-GUISADO M, CISNEROS JM, **URBANO-ISPIZUA A**, PEREZ-ROMERO P. Timing of CMV-specific Effect or Memory T-cells Predicts Viral Replication and Survival After Allogeneic Hematopoietic Stem Cell Transplantation. *Transpl Int*. 2014 Jul 29. [Epub ahead of print]. **IF: 3.120**
26. FLOWERS, M, CUTLER, C, **URBANO-ISPIZUA, A**, BOYIADZIS, M, et. al. Impact of chronic graft-versus-host disease on late relapse and survival on 7489 patients after myeloablative allogeneic hematopoietic cell transplantation for leukemia. *Clinica Cancer Research* 2014. October. [Epub ahead of print]. **IF: 8.193**
27. FALANTES, J.F, MD, TRUJILLO; P, PIRUAT, J.I, CALDERÓN-CABRERA, C, FRANCISCO J MÁRQUEZ-MALAYER, J.F, **MARTÍN-ANTONIO, B**, MILLÁN, A, GÓMEZ, M, GONZÁLEZ, J, MARTINO, M.L, PARODY, R, MONTERO, I, ESPIGADO, I, **URBANO-ISPIZUA, A**, PÉREZ-SIMÓN, J.A. Over-expression of GYS1, MIF and MYC is associated to adverse outcome and poor response to azacitidine in myelodysplastic syndromes and acute myeloid leukemia. *Clinical Lymphoma, Myeloma & Leukemia*. 2014. October. [Epub ahead of print]. **IF: 1,929**
28. QUEIRÓS AC, VILLAMOR N, CLOT G, MARTINEZ-TRILLOS A, KULIS M, NAVARRO A, MURGA PENAS EM, JAYNE S, MAJID A, RICHTER J, BERGMANN AK, KOLAROVA J, ROYO C, RUSSIÑOL N, CASTELLANO G, PINYOL M, BEA S, SALAVERRIA I, LÓPEZ-GUERRA M, COLOMER D, AYMERICH M, ROZMAN M, DELGADO J, GINÉ E, GONZÁLEZ-DÍAZ M, PUENTE XS, SIEBERT R, DYER MJS, LÓPEZ-OTÍN C, **ROZMAN C**, CAMPO E, LÓPEZ-GUILLERMO A, MARTÍN-SUBERO JI. A B-cell epigenetic signature defines three biological subgroups of chronic lymphocytic leukemia with clinical impact. *Leukemia* (accepted) **IF: 9,379**



29. **CARRERAS E.** How I manage sinusoidal obstruction syndrome after haematopoietic cell transplantation. *Br J Haematol* 2014 (in press).
IF: 4.942
30. MARTÍNEZ N, ALMARAZ C, VAQUÉ JP, VARELA I, DERDAK S, BELTRAN S, MOLLEJO M, CAMPOS-MARTIN Y, AGUEDA L, RINALDI A, KWEE5 I, GUT M, BLANC J, OSCIER D, MARTINEZ-LOPEZ J, SALAR A, **SOLE F**, RODRIGUEZ-PERALTO JL, DÍEZ C, GARCÍA JF, FRAGA M, SEBASTIÁN E, ALVÉS J, MENÁRGUEZ J, GONZÁLEZ-CARRERÓ J, FELIPE CASADO J, BAYES M, BERTONI F, GUT I, PIRIS MA (2.014): Whole exome sequencing in splenic marginal 1 zone lymphoma reveals mutations in genes involved in marginal zone differentiation. *Leukemia*. 28(6):1334-40. **IF: 9.379**. PMID: 24296945.
31. ESPINET B, FERRER A, BELLOSILLO B, NONELL L, SALAR A, VELA MC, FERNÁNDEZ-RODRÍGUEZ C, PUIGDECANET E, GIMENO J, GARCIA-GARCIA M, LUÑO E, COLLADO R, NAVARRO JT, DE LA BANDA E, ABRISQUETA P, ARENILLAS L, SERRANO C, LLORETA J, MIÑANA B, CERUTTI A, BOSCH F, ORFAO A, FLORENSA L, **SOLE F**, SANZ F, DOMINGUEZ-SOLA D, SERRANO S (2.014): Discerning between asymptomatic monoclonal B-cell lymphocytosis with cyclin D1 over expression and mantle cell lymphoma: from molecular profiling to flow cytometry. *Clinical Cancer Research* 20(4):1007-1019.
IF: 8.193. PMID: 24352646
32. BASTIDA-LERTXUNDI N, LOPEZ-LOPEZ E; MARTIN-GUERRERO I, PIÑAN MA, PUIGGROS A, **SOLE F**, NAVAJAS A, GARCÍA-ORAD Á (2.014): Errors in the interpretation of copy number variations due to the use of public databases as reference. *Cancer Genetics*. 207(4):164-167. **IF: 2,417**. PMID: 24767712
33. SAUMELL S, FLORENSA L, RODRÍGUEZ-RIVERA M, PEDRO C, HERNÁNDEZ-RIVAS JM, LUMBRERAS E, ABÁIGAR M, COLLADO R, IVARS D, CARBONELL F, MARUGÁN I, TORMO M, BOTIA M, PIÑAN MA, ANCÍN I, GONZÁLEZ T, DÍAZ N, **GRAU J, GRANADA I, RUIZ N**, LUISA MARTÍN M, FERNÁNDEZ M, DUARTE JJ, CALASANZ MJ, LARROY MJ, **SOLE F**. (2.014): Fluorescence in situ hybridization analysis does not increase detection rate for trisomy 8 in chronic myelomonocytic leukemia. *Leukemia and Lymphoma* 25:1-2. **IF: 2.3**. PMID: 24724779.
34. **ADEMA V**, TORRES E, **SOLE F**, SERRANO S, BELLOSILLO B (2014): Paraffin treasures. Do they last forever? *Biopreservation and Biobanking* 12(4):281-283. **IF 1.578**. PMID: 25075953.
35. CREE IA, DEANS Z, LIGTENBERG MJ, NORMANNO N, EDSJÖ A, ROULEAU E, **SOLE F**, THUNNISSSEN E, TIMENS W, SCHUURING E, DEQUEKER E, MURRAY S, DIETEL M, GROENEN P, VAN KRIEKEN JH; for the European Society of Pathology Task Force on Quality Assurance in Molecular Pathology and the Royal College of Pathologists (2.014): Guidance for laboratories performing molecular pathology for cancer patients. *J Clin Pathol*. 2014 Jul 10. **IF: 2.551**. PMID: 25012948.
36. XOCELLI A, BALIAKAS P, MOORE S, **SOLE F**, WICKHAM N, SALIDO M, ATHANASIADOU A, OSCIER D, STAMATOPOULOS K. Translocation t(2;7)(p11;q21-22): A rare genetic aberration translocation associated with B-CELL lymphoproliferative disorders of marginal zone origin (2.014): *Cancer Genetics*, 207 (3): 83-86. **IF: 2.417**. PMID: 25178943.
37. DIAZ A, PUIG-BUTILLÉ JA, MUÑOZ C, COSTA D, DÍEZ A, GARCIA-HERRERA A, CARRERA C, BADENAS C, **SOLE F**, MALVEHY J, PUIG S, ALOS L (2.014): TERT gene amplification is associated with poor outcome in acral lentiginous melanoma. *Journal of the American Academy of Dermatology* (letter to the editor). 71(4):839-841. **IF: 5.004**. PMID: 25219713.



38. SCHNEIDER RK, **ADEMÀ V**, HECKL D, JÄRÅS M, **MALLO M**, LORD AM, CHU A, MCCONKEY M, KRAMANN R, MULLALLY A, BEJAR R, **SOLÉ F**, EBERT BL (2014): Role of casein kinase 1A1 in the biology and targeted therapy of del(5q) MDS. *Cancer Cell*. **IF: 23.893**. PMID: 25242043.
39. SERRANO MJ, ORTEGA FG, ALVAREZ-CUBERO MJ, NADAL R, SANCHEZ-ROVIRA P, SALIDO M, RODRÍGUEZ M, MACIÀ M, GARCÍA-PUCHE JL, DELGADO-RODRIGUEZ M, **SOLÉ F**, A. GARCÍA M, PERÁN M, ROSELL R, MARCHAL JA, LORENTE JA: EMT and EGFR in CTCs cytokeratin negative non-metastatic breast cancer. *Oncotarget* 2014; 5(17):7486-7497. PMID: 25277187. **IF: 6.627**.
40. **BRITOS-FRANCO P, RODRÍGUEZ-HERNÁNDEZ I, NAVARRO JT, GRANADA I, TAPIA G, JUNÀ J, RIBERA JM, MILLÀ F**. Translocation (18;22)(q21;q11.2) in B-cell lymphoproliferative disorders: a report of six cases. *Leukemia & Lymphoma*.2014 Jul 17 [Epub ahead of print]. **IF: 2.301**
41. **SORIGUÉ M, JUNCÀ J, GASSIOT S, MILLÀ F, MATE JL, NAVARRO JT**. A case of CD138-/CD19+/CD4+ IgD plasma cell leukemia. *Cytometry Part B (Clinical Cytometry)*.2014 Mar 22[Epub ahead of print]. **IF: 2.283**
42. **BATLLE M, MORGADES M, VIVES S, FERRÀ C, ORIOL A, SANCHO JM, MORENO M, MAGALLÓN L, RIBERA JM**. Usefulness and safety of oral cryotherapy in the prevention of oral mucositis after conditioning regimens with high-dose melphalan for autologous stem cell transplantation for lymphoma and myeloma. *European Journal of Haematology*. 2014 May 30 [Epub ahead of print]. **IF: 2.414**
43. **NAVARRO JT, RIBERA JM**. Unique clinical implications of HIV-related lymphoma. *International Journal of Hematologic Oncology*. 2014; 3: 171-174. **IF: 1,679**
44. **JUNCÀ J, BOTÍN T, VILA J, NAVARRO JT, MILLÀ F**. Adult T-cell leukemia/lymphoma with an unusual CD1a positive phenotype. *Cytometry Part B -Clinical Cytometry*. 2014; 86: 292-296. **IF: 2.283**
45. **MOTLLÓ C, SANCHO JM, GRIFOLS JR, JUNCÀ J, MORGADES M, ESTER A, RODRÍGUEZ I, VIVES S, BATLLE M, GUARDIA R, FERRÀ C, GALLARDO D, MILLÀ F, FELIU E, RIBERA JM**. Mobilization and engraftment of peripheral blood stem cells in healthy related donors > 55 years old. *Cytotherapy*. 2014; 16:406-11. **IF:3.100**
46. MUÑIZ C, MARTÍN-MARTÍN L, LÓPEZ A, SÁNCHEZ-GONZÁLEZ B, SALAR A, ALMEIDA J, **SANCHO JM, RIBERA JM**, et al. Contribution of cerebrospinal fluid sCD19 levels to the detection of CNS lymphoma and its impact on disease outcome. *Blood* 2014; 123:1864-9. **IF: 9.775**
47. **MOTLLÓ C, RIBERA JM, MORGADES M, GRANADA I**, MONTESINOS P, GONZÁLEZ-CAMPOS J, FERNÁNDEZ-ABELLÁN P, TORMO M, BETHENCOURT C, BRUNET S, HERNÁNDEZ-RIVAS JM, MORENOMJ, SARRÀ J, DEL POTRO E, BARBA P, BERNAL T, GRANDE C, **GRAU J, CERVERA J, FELIU E**; PETHEMA Group, Spanish Society of Hematology. Prognostic significance of complex karyotype and monosomal karyotype in adult patients with acute lymphoblastic leukemia treated with risk-adapted protocols. *Cancer* 2014 Aug 12. doi: 10.1002/cncr.28950. [Epub ahead of print] PubMed PMID: 25116331. **IF: 4.901**
48. **RIBERA JM, RIBERA J, GENESCÀ E**. Treatment of adolescent and young adults with acute lymphoblastic leukemia. *Mediterr J Hematol Infect Dis*. 2014 Jul2;6(1):e2014052. doi: 10.4084/MJHID.2014.052. eCollection 2014. Review. PubMed PMID: 25045460; PubMed Central PMCID: PMC4103503. **IF:**



49. **RIBERA JM, ORIOL A, MORGADES M**, MONTESINOS P, SARRÀ J, GONZÁLEZ-CAMPOS J, BRUNET S, TORMO M, FERNÁNDEZ-ABELLÁN P, GUÀRDIA R, BERNAL MT, ESTEVE J, BARBA P, MORENO MJ, BERMÚDEZ A, CLADERA A, ESCODA L, GARCÍA-BOYERO R, DEL POTRO E, BERGUAJ, AMIGO ML, GRANDE C, RABUÑAL MJ, HERNÁNDEZ-RIVAS JM, **FELIU E**. Treatment of high-risk Philadelphia chromosome-negative acute lymphoblastic leukemia in adolescents and adults according to early cytologic response and minimal residual disease after consolidation assessed by flow cytometry: final results of the PETHEMA ALL-AR-03 trial. *J Clin Oncol*. 2014; 32(15):1595-604. **IF: 17.960**
50. **GENESCÀ E, RIBERA J, RIBERA JM**. [Acute lymphoblastic leukemia of T progenitors: From biology to clinics]. *Med Clin (Barc)*. 2014 Mar 22. pii:S0025-7753(14)00123-7. doi: 10.1016/j.medcli.2014.01.029. **IF: 1.252**
51. **XICOY B, RIBERA JM**, MÜLLER M, GARCÍA O, HOFFMANN C, ORIOL A, HENTRICH M, GRANDE C, WASMUTH JC, ESTEVE J, VAN LUNZEN J, DEL POTRO E, KNECHTEN H, BRUNET S, MAYR C, ESCODA L, SCHOMMERS P, ALONSO N, VALL-LLOVERA F, PÉREZ M, MORGADES M, GONZÁLEZ J, FERNÁNDEZ A, THODEN J, GÖKBUGET N, HOELZER D, FÄTKENHEUER G, WYEN C; PETHEMA Group and German HIV Lymphoma Cohort. Dose-intensive chemotherapy including rituximab is highly effective but toxic in human immunodeficiency virus-infected patients with Burkitt lymphoma/leukemia: parallel study of 81 patients. *Leuk Lymphoma*. 2014; 55(10):2341-8. **IF: 2.301**
52. PIÑANA JL, SANZ J, PICARDI A, **FERRÁ C**, MARTINO R, BARBA P, GONZALEZ-VICENT M, PASCUAL MJ, MARTÍN C, VERDEGUER A, DE HEREDIA CD, MONTESINOS P, RIBERA JM, SANZM, ARCESE W, SANZ G; GETH groups; GITMO groups. Umbilical cord blood transplantation from unrelated donors in patients with Philadelphia chromosome-positive acute lymphoblastic leukemia. *Haematologica*. 2014; 99 (2):378-84. **IF: 5.868**
53. RUGGERI A, SANZ G, BITTENCOURT H, SANZ J, RAMBALDI A, VOLT F, YAKOUB-AGHA I, **RIBERA JM**, MANNONE L, SIERRA J, MOHTY M, SOLANO C, NABHAN S, ARCESE W, GLUCKMANE, LABOPIN M, ROCHA V; Eurocord and Acute Leukemia Working Party of European Blood and Marrow Transplant Group. Comparison of outcomes after single or double cord blood transplantation in adults with acute leukemia using different types of myeloablative conditioning regimen, a retrospective study on behalf of Eurocord and the Acute Leukemia Working Party of EBMT. *Leukemia*. 2014; 28(4):779-86. **IF: 9.379**
54. TUCUNDUVA L, RUGGERI A, SANZ G, FURST S, SOCIÉ G, MICHALLET M, ARCESEW, MILPIED N, YAKOUB-AGHA I, LINKESCH W, CORNELISSEN J, MANNONE L, IORI AP, **RIBERA JM**, SANZ J, MONTESINOS P, PURTILL D, LABOPIN M, GLUCKMAN E, MOHTY M, ROCHA V. Risk factors for outcomes after unrelated cord blood transplantation for adults with acute lymphoblastic leukemia: a report on behalf of Eurocord and the Acute Leukemia Working Party of the European Group for Blood and Marrow Transplantation. *Bone Marrow Transplant*. 2014; 49(7):887-94. **IF: 3.466**
55. CASTILLO JJ, BOWER M, BRÜHLMANN J, NOVAK U, FURRER H, TANAKA PY, BESSON C, MONTOTO S, Cwynarski K, ABRAMSON JS, DALIA S, BIBAS M, CONNORS JM, FURMAN M, NGUYEN ML, COOLEY TP, BELTRAN BE, COLLINS JA, VOSE JM, **XICOY B, RIBERA JM**; for the HIV-Associated Hodgkin Lymphoma in the cART Era Study Group. Prognostic factors for advanced-stage human immunodeficiency virus-associated classical Hodgkin lymphoma treated with doxorubicin, bleomycin, vinblastine, and dacarbazine plus combined antiretroviral therapy: A multi-institutional retrospective study. *Cancer*. 2014 Sep 23. doi: 10.1002/cncr.29066. **IF: 4.901**
56. BARTA SK, XUE X, WANG D, LEE JY, KAPLAN LD, **RIBERA JM, ORIOL A**, SPINA M, TIRELLI U, BOUE F, WILSON WH, WYEN C, DUNLEAVY K, NOY A, SPARANO JA. A new prognostic score for AIDS-related lymphomas in the Rituximab-era. *Haematologica*. 2014 Aug 22. pii: haematol.2014.111112. **IF: 5.868**



57. **SORIGUÉ M, XICOY B, GRIFOLS JR, RIBERA JM.** [Autoimmune hemolytic anemia refractory to medical treatment after chlorine dioxide intake in a patient with idiopathic thrombocytopenic purpura.]. *Med Clin (Barc)*. 2014 Jun 18. pii:S0025-7753(14)00344-3. doi: 10.1016/j.medcli.2014.05.002. **IF: 1.252**
58. **JIMÉNEZ MJ, FERRA C, GARCÍA O, DE ARRIBA F, JIMÉNEZ S, INSUNZA A, CALABUIG M, MANTECON A, SÁNCHEZ J, TORRES M, BALSALOBRE P, LINIO J, JIMÉNEZ A, FELIU E, RIBERA JM.** The commitment and evaluation of the quality management plan by professionals from accredited stem cell transplant centers in Spain. *Bone Marrow Transplant*. 2014 JUL; 49 (7):990-2. **IF: 3.466**
59. NADAL R, SALIDO M, NONELL L, RODRÍGUEZ-RIVERA M, PUIGDECANET E, MACIÀ M, COROMINAS JM, SERRANO MJ, LORENTE JA, **SOLÉ F.** Single-nucleotide polymorphism array analysis reveals distinct chromosomal aberrations in breast cancer tumors according to the circulating tumor cells status. *Tumor Biology*. PMID: 2528675. **IF: 2.840.**
60. BRAULKE F, MÜLLER-THOMAS C, GÖTZE K, PLATZBECKER U, GERMING U, BRÜMMENDORF TH, NOLTE F, GIAGOUNIDIS A, LÜBBERT M, GREENBERG PL, **SOLÉ F, MALLO M,** BENNETT JM, SLOVAK ML, OHYASHIKI M, LE BEAU MM, TÜCHLER H, SHIRNESHAN K, PFEILSTÖCKER M, NÖSSLINGER T, HILDEBRANDT B, AUL C, STAUDER R, VALENT P, FONATSCH CH, TRÜMPER L, HAASE D, SCHANZ J. Cytogenetic evaluation of IPSS and IPSS-R based on FISH analyses of CD34+ peripheral blood cells: Results from a prospective German diagnostic study. *Haematologica* (accepted). **IF: 5.868.**
61. **RIBERA J, ZAMORA L, JUNCÀ J, RODRIGUEZ I, MARCÉ S, CABEZÓN M, MILLÀ F.** Usefulness of IGH/TCR PCR studies in lymphoproliferative disorders with inconclusive clonality by flow cytometry. *Cytometry Part B- Clin Cytom* 2014;86: 25-31. **IF: 2.283**
62. GRIFFITHS M, PATTON SJ, GROSSI A, CLARK J, PAZ MF, LABOURIER E. On behalf of the Labceutics **International BCR-ABL1 Standardization Study Group.** Conversion, Correction, and International Scale Standardization Results From a Multicenter External Quality Assessment Study BCR-ABL1 Testing. *Arch Pathol Lab Med*. 2014 Jul 25. [Epub ahead of print]. **IF: 2,884**
63. BENBOUBKER L, DIMOPOULOS MA, DISPENZIERI A, CATALANO J, BELCH AR, CAVO M, PINTO A, WEISEL K, LUDWIG H, BAHLIS N, BANOS A, TIAB M, DELFORGE M, CAVENAGH J, GERALDES C, LEE JJ, CHEN C, **ORIOI A,** DE LA RUBIA J, QIU L, WHITE DJ, BINDER D, ANDERSON K, FERMAND JP, MOREAU P, ATTAL M, KNIGHT R, CHEN G, VAN OOSTENDORP J, JACQUES C, ERVIN-HAYNES A, AVET-LOISEAU H, HULIN C, FACON T. FIRST Trial Team. Lenalidomide and dexamethasone in transplant-ineligible patients with myeloma. *N Engl J Med*. 2014 Sep 4; 371(10):906-17. doi: 10.1056/NEJMoa1402551. **IF: 54,420**
64. **ORIOI A.** Treatment of Relapsed or Refractory Acute Lymphoblastic Leukemia in Adult Patients. *Acta Haematol*. 2014 Aug 23; 133(1):89-90. PMID: 25170866. **IF: 0,994**
65. MATEOS MV, **ORIOI A,** MARTÍNEZ-LÓPEZ J, TERUEL AI, LÓPEZ DE LA GUÍA A, LÓPEZ J, BENGOCHEA E, PÉREZ M, MARTÍNEZ R, PALOMERA L, DE ARRIBA F, GONZÁLEZ Y, HERNÁNDEZ JM, GRANELL M, BELLO JL, BARGAY J, PEÑALVER FJ, MARTÍN-MATEOS ML, PAIVA B, MONTALBÁN MA, BLADÉ J, LAHUERTA JJ, SAN-MIGUEL JF. Update of the GEM2005 trial comparing VMP/VTP as induction in elderly multiple myeloma patients: do we still need alkylators? *Blood*. 2014 Aug 7. PPI: *Blood*-2014-05-573733. [Epub ahead of print]. PMID: 25102853. **IF: 9.775**



66. LÓPEZ-CORRAL L, CORCHETE LA, SARASQUETE ME, MATEOS MV, GARCÍA-SANZ R, FERMIÑÁN E, LAHUERTA JJ, BLADÉ J, **ORIOLA**, TERUEL AI, MARTINO ML, HERNÁNDEZ J, HERNÁNDEZ-RIVAS JM, BURGUILLO FJ, SAN MIGUEL JF, GUTIÉRREZ NC. Transcriptome analysis reveals molecular profiles associated with evolving steps of monoclonal gammopathies. *Haematologica*. 2014 Aug; 99 (8):1365-72. doi: 10.3324/haematol.2013.087809. Epub 2014 May 9. PMID: 24816239. **IF: 5.868**.
67. MATEOS MV, BRINGHEN S, RICHARDSON PG, LAHUERTA JJ, LAROCCA A, **ORIOLA**, BOCCADORO M, GARCÍA-SANZ R, DI RAIMONDO F, ESSELTINE DL, VAN DE VELDE H, DESAI A, LONDHE A, SAN MIGUEL JF, PALUMBO A. Bortezomib cumulative dose, efficacy, and tolerability with three different bortezomib-melphalan-prednisone regimens in previously untreated myeloma patients ineligible for high-dose therapy. *Haematologica*. 2014 Jun; 99(6):1114-22. doi: 10.3324/ Haematol.2013.099341. Epub 2014 Apr 24. PMID: 24763402. **IF: 5.868**.
68. MARTINEZ-LOPEZ J, LAHUERTA JJ, PEPIN F, GONZÁLEZ M, BARRIO S, AYALA R, PUIG N, MONTALBAN MA, PAIVA B, WENG L, JIMÉNEZ C, SOPENA M, MOORHEAD M, CEDENA T, RAPADO I, MATEOS MV, ROSIÑOL L, **ORIOLA**, BLANCHARD MJ, MARTÍNEZ R, BLADÉ J, SAN MIGUEL J, FAHAM M, GARCÍA-SANZ R. Prognostic value of deep sequencing method for minimal residual disease detection in multiple myeloma. *Blood*. 2014 May 15; 123 (20):3073-9. doi: 10.1182/blood-2014-01-550020. Epub 2014 Mar 19. PMID: 24646471. **IF: 9.775**
69. DE FALCO L, SILVESTRI L, KANNENGIESSER C, MORÁN E, OUDIN C, RAUSA M, BRUNO M, ARANDA J, ARGILES B, YENICESU I, FALCON-RODRIGUEZ M, YILMAZ-KESKIN E, KOCAK U, BEAUMONT C, CAMASCHELLA C, IOLASCON A, GRANDCHAMP B, **SANCHEZ M**. Functional and clinical impact of novel Tmprss6 mutations in Iron-Refractory Iron-Deficiency Anaemia patients and genotype-phenotype studies. *Hum Mutat*. 2014 Aug 25. doi: 10.1002/humu.22632. [Epub ahead of print] **IF: 5.122**, Q1
70. TEIXEIRA E, BORLIDO-SANTOS J, BRISSOT P, BUTZECK B, COURTOIS F, EVANS RW, FERNAU J, NUNES JA, MULLETT M, PANEQUE M, PINEAU B, PORTO G, SORRILL R, **SANCHEZ M**, SWINKELS DW, TOSKA K, VARKONYI J. the EFAPH, the European Federation of Associations of Patients with Haemochromatosis. The importance of the general practitioner as an information source for patients with hereditary haemochromatosis. *Patient Educ Couns*. 2014 May 5. PPI: S0738-3991(14)00178-5. doi: 10.1016/j.pec.2014.04.017. [Epub ahead of print] **IF: 2,598**, Q1D1
71. OST A, LEMPRADL A, CASAS E, WEIGERT M, TIKO T, DENIZ M, PANTANO L, BOENISCH U, ITSKOV PM, STOECKIUS M, RUF M, RAJEWSKY N, REUTER G, IOVINO N, RIBEIRO C, ALENIUS M, HEYNE S, **VAVOURI T**, POSPISILIK JA. Paternal diet defines offspring chromatin state and intergenerational obesity. *Cell* (In press). **FI: 33,116**
72. BOSCH R, DIEGUEZ-GONZALEZ R, MORENO MJ, GALLARDO A, NOVELLI S, ESPINOSA I, CÉSPEDES MV, PAVÓN MA, BRIONES J, GRAÑENA A, **SIERRA J, MANGUES R**, ISOLDA CASANOVA I. Focal adhesion proteins expression in human diffuse large B cell lymphoma. *Histopathology* 2014, 65 (1): 119-31. **IF:3,301**
73. MORENO MJ, BOSCH R, DIEGUEZ-GONZALEZ R, NOVELLI S, MOZOS A, GALLARDO A, PAVÓN MA, CÉSPEDES MV, GRAÑENA A, ALCOCEBA M, BLANCO O, GONZALEZ-DÍAZ M, **SIERRA J, MANGUES R**, CASANOVA I. CXCR4 expression enhances diffuse large B-cell lymphoma dissemination and decreases patient survival. CXCR4 expression enhances diffuse large B-cell lymphoma dissemination and decreases patient survival. *J Pathol*. 2014 Sep 17. doi: 10.1002/path.4446. [Epub ahead of print]. **IF: 7.330**



Headquarters

C/ Muntaner, 383 3r. 08021
Barcelona
Tel. (+34) 93 414 55 66

For any matter concerning this report
please contact:
comunicacio@carrerasresearch.org

The report can also be downloaded
from:
<http://www.carrerasresearch.org>

Publisher, layout and typesetting

Josep Carreras Leukaemia Research
Institute

Photography

Photographic archives of the Josep
Carreras Leukaemia Foundation and
the Josep Carreras Leukaemia
Research Institute



Scientific Report IJC 2014



INSTITUT DE RECERCA CONTRA
LA LEUCÈMIA **JOSEP CARRERAS**
Per un futur sense leucèmia